

PRODUCT BROCHURE

Enterprise Management Construction*

*The next generation of business
management solutions purpose-built
for the construction industry.*

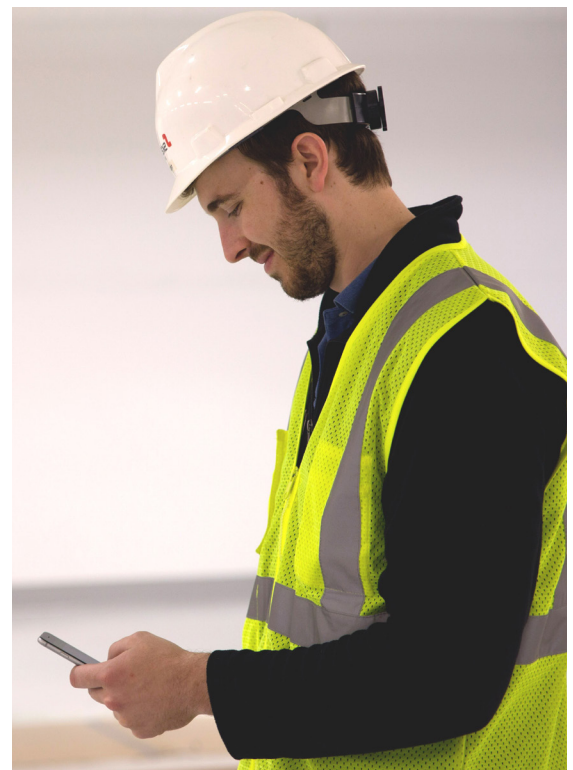


An ever-changing landscape

Technology is redefining business as we know it. Across every industry and market segment, the increasing pace of technological change is forcing companies to become more agile or they will likely fall behind and become obsolete. The question facing every company today is not “Can we afford the cost of change?” but rather, “What will the cost be of not changing?”

With Enterprise Management Construction*, you’re choosing the next generation of business management solutions for the construction industry. It’s become clear that smart companies need to adopt new technology processes to transform construction operations, to be successful now and in the years to come. Enterprise Management Construction will help you stay agile and meet whatever demands come your way.

Seamlessly integrated with Enterprise Management (formerly known as Sage X3), Enterprise Management Construction runs your business faster than ever before, with a cohesive, enterprise-class solution. Manage all of your core business processes: from financials, purchasing, budget and cost management to pricing and planning a project, site level control, and the completion certificate. It accelerates collaboration, reporting, and delivers real-time insight into all costs and operational performance—with built-in functionality for best practice financial management and the ability to accommodate your unique rules and processes. Easily scalable, you’ll never run out of capacity again because it quickly adapts to your changing needs to drive efficiency and help you manage costs while ensuring services are on time and on budget.



Run your business with ease

Get more done, faster

Increase user productivity and accelerate adoption with an intuitive web interface that users can easily personalize to work the way they do.

Go where your business takes you

Access your data on mobile devices, manage costs, project statuses, approve purchases and view key performance indicators on the go from any device. Enterprise Management Construction includes a complete mobile framework to deploy specific functions to your workforce on site or in the office.

Take back control over your processes

Eliminate inefficiencies, ensure compliance, and streamline operations with end-to-end integration of your business processes to control costs and improve profits and controls.

Get the insight you need when you need it

Evaluate risks and monitor performance in real-time with user dashboards, self-service business intelligence and reporting tools—delivered on premise, on mobile or in the cloud.

Gain agility and focus on your business

Take advantage of enterprise-class business management functionality, security, and scalability offered by Enterprise Management** at a fraction of the cost and complexity of typical ERP systems. Simplify IT management, free up resources, and easily manage change without compromising customer service.

One system, anywhere at anytime

Reduce costs by implementing a single system for your engineering needs that provides a “single source of truth”. It replaces legacy systems that inhibit performance through duplicate processing, weak integrations, and an overreliance on spreadsheets.

Integration made easy

Many construction organizations invest heavily in specific best-of-breed software solutions that are still required as part of the transition phase to a new business management solution. Enterprise Management Construction* delivers many integration possibilities, whether batch or real time, using web services or java based technology.

Built by construction pros, for construction pros

Run every aspect of your construction business faster, more simply, and far more flexibly than ever before.



Gain insight

Access up-to-date, detailed, and aggregated project, asset, and financial data with unified KPIs and dashboards.



Reduce risks

Protect project profitability through faster recognition and mitigation of project-related issues.



Improve collaboration

Enable real-time, field-to-office communication and project mobilization on any device.



Grow with confidence

Use one centralized, scalable, and open construction management platform across your entire business.

Features key to driving success

Project management

- Project cash flow
- Contractor and Sub-contractor management
- Project and Job Costing
- Change or Variation (UK) Control management
- Procurement including RFP management
- Transmittal control

Financial and accounting

- Financial and operation asset management
- Dimensional cost center analysis to track and manage impact of initiatives
- Bank, loan, bond and cash management with full cash-flow visibility and modeling
- Cost and analytical accounting with internal requisitions and cost/budget transfers
- Budget commitments and planning
- Capital Asset Policy management, means-testing and reporting
- Full audit capabilities

Estimating

- Import estimates from Sage Estimating and third-party estimating applications
- Provide regional historical pricing data to support estimate accuracy

Customer service – leveraging the feature set of Sage X3 CRM and Sage CRM

- Integration with CRM and customer service management
- Customer self-service portal

Payroll and HR integration – leveraging the feature set of the Sage HCM solutions *

- Time-sheet collection
- Integrated HRM
- Employee self service
- Localized payroll

Document management and transmission control

- Maintaining Documents for the Official Record
- Integration with 3rd party collaboration suites
- Document approval for release
- Approved Version distribution to field operations
- Version management
- Comprehensive document, drawing and plan transmission tracking with date and time stamping

Reporting and analytics

- Visual key performance indicators
- Real-time reporting and analytics
- Financial reporting with full roll-up and consolidations
- Native integration to BI tools
- Earned Value Analysis at multiple levels within the work breakdown and deliverable structures including visualizations

Workflow and automated alerts

- Embedded workflow automation and alerts
- Role-based workspace and dashboards
- Automated project and role-based access controls

Technology and Integration

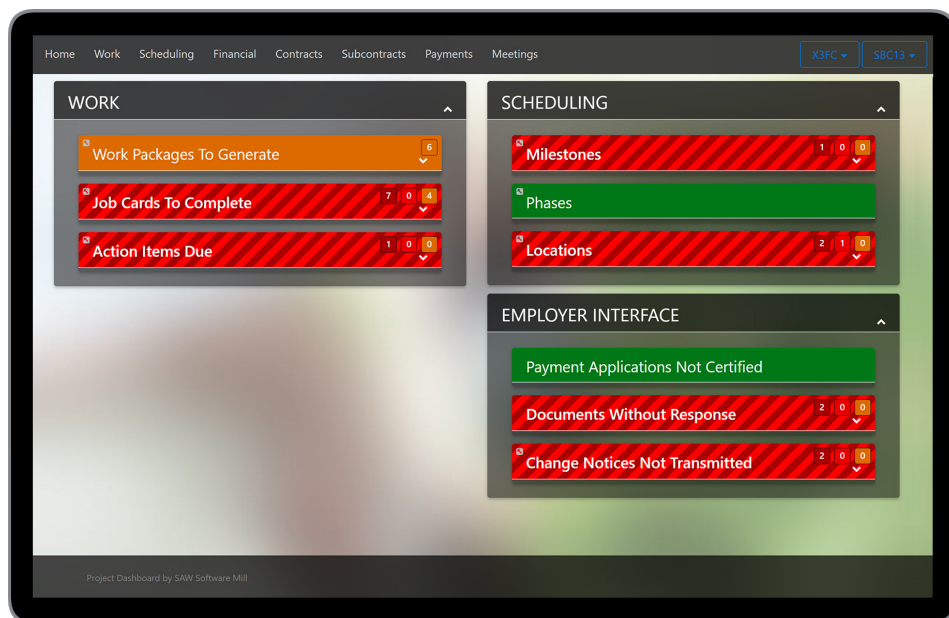
- Runs in a browser on any device
- Scalable to thousands of users
- Seamless integration to external applications
- Supports Oracle and Microsoft SQL
- Customized integration and development platform
- Pre-built integration with Oracle Primavera and Microsoft Project
- Microsoft Office integration

Solution overview

Enterprise Management Construction runs every aspect of your construction project from inception to completion. Leveraging a history of over 30 years in the construction space, this new industry solution built on the Enterprise Management global platform offers a completely modern, mobile, and fully integrated capital project management solution 100% built to address the complexity and risks faced by today's mid-tier to larger construction firms.

Key Features

- Construction project management
- Project WBS visualization with drill down
- Project costing and financial management
- Stock and purchasing management
- Contract and sub-contract management
- Document management
- Change or Variation (UK) Control management
- Timesheet tracking
- Treasury and cash flow management
- Integrated HR & payroll
- Project analytics & industry KPIs



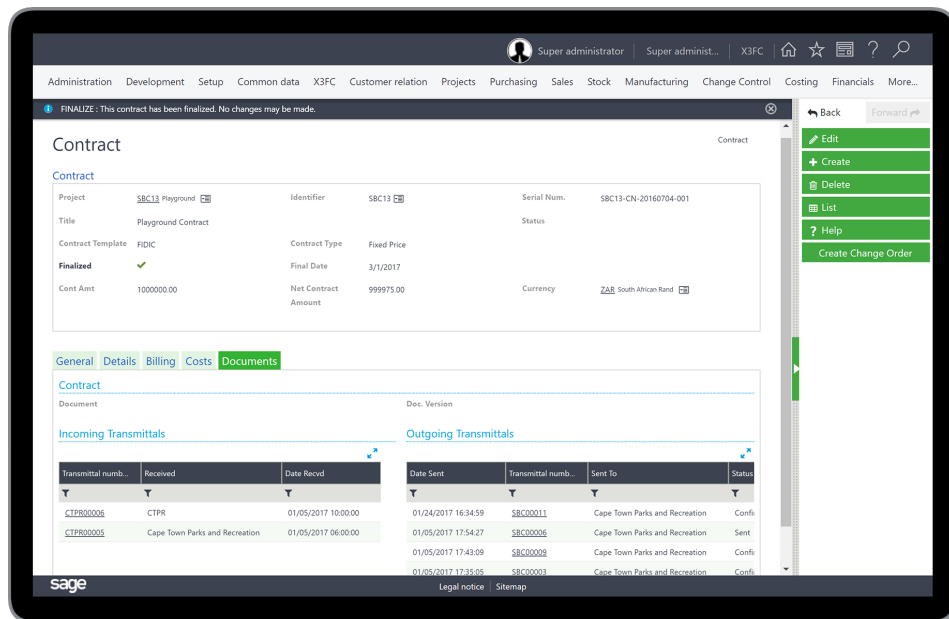
Contract and document management

Manage all your contracts and sub-contract agreements, along with supporting documents across the entire project lifecycle—all in one system.

This gives you the control and confidence that project tasks are being completed according to the latest agreed to scope, including any and all change orders. You'll also benefit from a full audit trail of who approved what, and when to protect against discrepancies and reduce risk of costly errors.

Key Features

- Contract and sub-contract management
- Document transmission tracking with data/time stamping
- Version management
- Mapped to job cards and work packages
- Full audit trail



Project task management

Optimally assign, manage, and track all labor, equipment, and materials in real-time for complete resource optimization at every stage and level of your project.

Enterprise Management Construction bring traditional ERP capabilities like procurement, warehouse management, inventory management, and HR—and puts this real-time data right in the hands of project managers and construction managers for streamlined project tasks and work packages execution.

Key Features

- Job card creation and tracking
- Procurement & RFP management
- Inventory & materials management
- Labor management
- Subcontractor management
- Meeting minutes, action item tracking and reporting

Index	Project	Short title	Long title	Parent	Path
1	SBC10 Sandbox	Sandbox	Sandbox Project	0	Sandbox
2	SBC10 Sandbox	Design/Engineer	Design & Engineer	1 Sandbox	Sandbox.Design/Engineer
3	SBC10 Sandbox	Construction	Construction	1 Sandbox	Sandbox.Construction
4	SBC10 Sandbox	Specifications	Functional & Technical Specifications	2 Design/Engineer	Sandbox.Design/Engineer.Specification
5	SBC10 Sandbox	Final Design	Final Design	2 Design/Engineer	Sandbox.Design/Engineer.Final Design
6	SBC10 Sandbox	Foundation	Foundation	3 Construction	Sandbox.Construction.Foundation
7	SBC10 Sandbox	Sandbox Build	Sandbox Build	3 Construction	Sandbox.Construction.Sandbox Build
8	SBC10 Sandbox	Integration	Integration	3 Construction	Sandbox.Construction.Integration
9	SBC10 Sandbox	QA/QC	QA/QC	10 Testing and Safety	Sandbox.Testing and Safety.QA/QC
10	SBC10 Sandbox	Testing and Safety	Testing and Safety Checks	1 Sandbox	Sandbox.Testing and Safety
11	SBC10 Sandbox	Handoff	Handoff Project	1 Sandbox	Sandbox.Handoff
12	SBC10 Sandbox	Inspection	Safety Inspection	10 Testing and Safety	Sandbox.Testing and Safety.Inspection
13	SBC10 Sandbox	Excavation	Excavation	6 Foundation	Sandbox.Construction.Foundation.Excav
14	SBC10 Sandbox	Concrete	Concrete	6 Foundation	Sandbox.Construction.Foundation.Conc
15	SBC10 Sandbox	Walls	Walls	7 Sandbox Build	Sandbox.Construction.Sandbox Build.W
16	SBC10 Sandbox	Placement	Sand Placement	7 Sandbox Build	Sandbox.Construction.Sandbox Build.Pl

Project schedule management

Empower project managers to make decisions using detailed, work-in-process (WIP) project data that's captured directly from the field.

Apply industry best practices using a visually intuitive Work Breakdown Structure (WBS) of your entire project for complete decomposition and drill down capabilities. This presents the opportunity to identify and react to problems very quickly in-order to keep your project on time, and within budget.

Key Features

- Planning and milestone management
- Project costing
- Integration with Oracle Primavera and Microsoft Project so your schedule is always up to plan
- Change orders and punchlists
- Timesheet capture
- Role-based dashboards and WIP reporting

The screenshot displays the Sage Enterprise Management Construction software interface. The top navigation bar includes tabs for Home, Work, Scheduling (active), Financial, Contracts, Subcontracts, Payments, and Meetings. On the right, there are dropdown menus for 'X3FC' and 'SBC13'. The main content area is divided into four panels:

- LOCATIONS:** A table with columns: Location, Primary Warehouse, Estimated Start, Estimated End, and an edit icon.

Location	Primary Warehouse	Estimated Start	Estimated End
Playground			
Site 2			
Site 3		2016-11-01	2017-09-28
Site 4		2016-10-01	2017-12-30
- PHASES:** A table with columns: Phase, Estimated Start, Estimated End, and an edit icon.

Phase	Estimated Start	Estimated End
Construct	2017-01-01	2017-09-01
Design	2016-10-18	2016-11-15
Engineer	2016-11-01	2016-12-01
Handover	2017-09-02	2017-10-31
- MILESTONES:** A table with columns: Title, Due Date, Scheduled Value, Completion Date, and an edit icon.

Title	Due Date	Scheduled Value	Completion Date
Finish Design	2017-02-07	15,000.00	
Completion of entire project	0000-00-00	0.00	
SBC13 Site Prep completion	2017-02-02	60,000.00	
- WORK FRONTS:** A table with columns: Reference Number, Title, Location, Is Accessible, Planned Accessible, and Is Available.

Reference Number	Title	Location	Is Accessible	Planned Accessible	Is Available
Playground	Playground	1	✓	2017-02-02	✓
SITE3.GROUNDWORK	Ground work for Site 3	3	✓	2017-02-16	✓
SITE3.MERRYGO	Merry go round for Site 3	3	✓	2017-02-01	✓

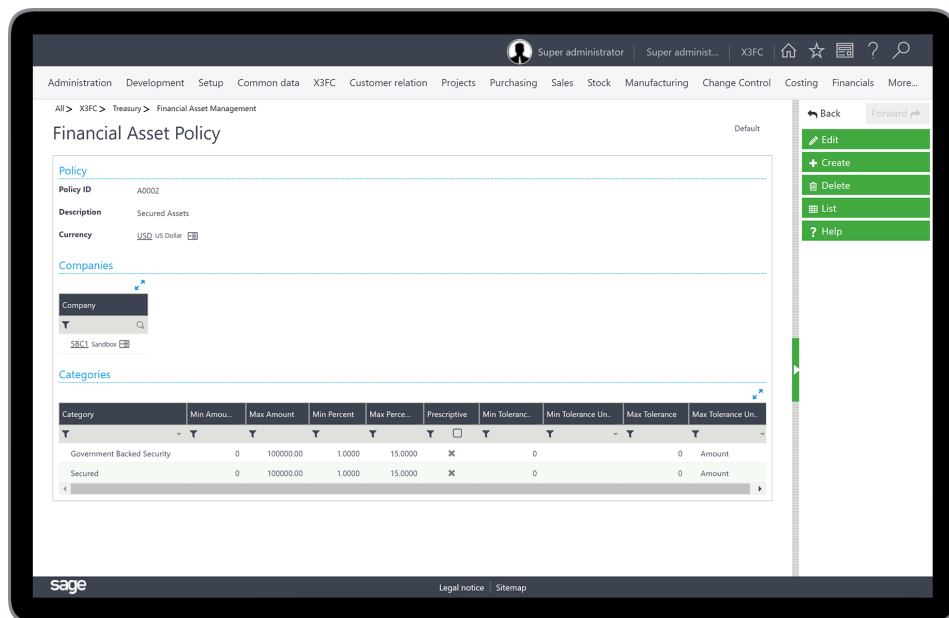
Construction financial management

Manage complex construction projects like individual financial entities, benefiting from detailed project costing and earned value analysis down to the most granular node level of your project.

The world-class financial and accounting capabilities of Enterprise Management are fully embedded throughout your construction management processes to ensure continuous visibility and unprecedented levels of control over financial assets. This includes native multi-ledger, multi-legislative and multi-currency support to manage different sites, business entities, and multiple projects all from one, integrated system.

Key Features

- Project financials and reporting
- Cost code and category management
- Financial asset management
- Earned value analysis (EVA)
- Billing and payment applications
- Localized industry compliance



Treasury & cash flow management

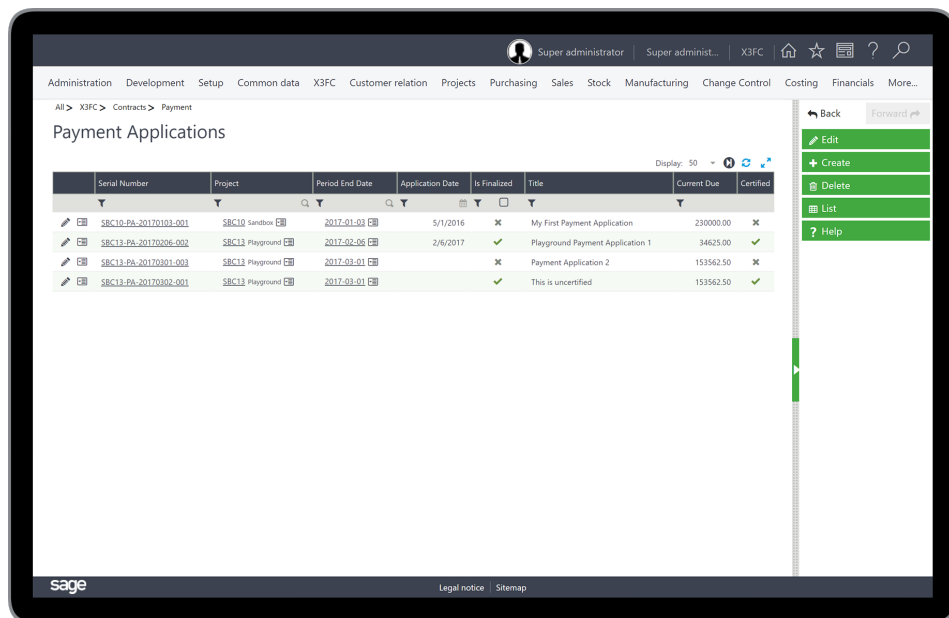
Optimally manage cash flows across all your projects, companies and divisions reducing liquidity risks and simplify compliance with financial banking covenants.

Enterprise Management Construction's treasury management function empowers your CFO's office with continuous, real-time visibility into cash flow positions for individual projects, and across multiple projects for a complete portfolio view.

In addition to tracking current projects, you can also forecast the impact of a new project on cash flows, including best/worst case scenarios over time to identify and address potential problems before they occur.

Key Features

- Unified, cross-projects cash flow visibility and reporting
- Detailed project cash flow modeling over time
- Best/worse case comparison reports
- Integrated loans and liabilities management



Serial Number	Project	Period End Date	Application Date	Is Finalized	Title	Current Due	Certified
SBC10-PA-20170103-001	SBC10 Sandbox	2017-01-03	5/1/2016	✗	My First Payment Application	230000.00	✗
SBC13-PA-20170206-002	SBC13 Playground	2017-02-06	2/6/2017	✓	Playground Payment Application 1	34625.00	✓
SBC13-PA-20170301-003	SBC13 Playground	2017-03-01		✗	Payment Application 2	153562.50	✗
SBC13-PA-20170302-001	SBC13 Playground	2017-03-01		✓	This is uncertified	153562.50	✓

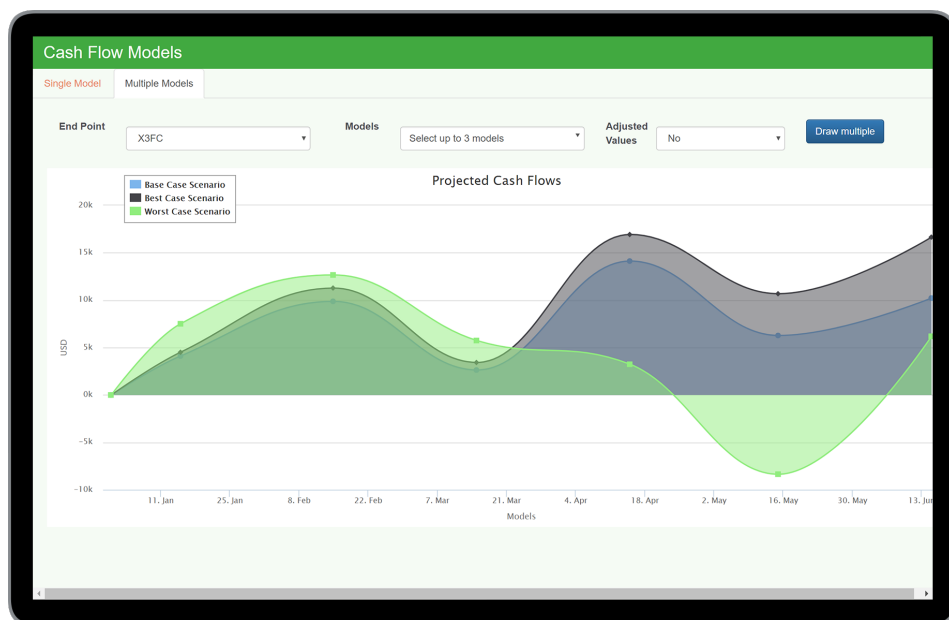
Analytics and reporting

Enterprise Management Construction is a complete capital project management solution that captures granular financial and project data throughout the construction lifecycle. This up-to-date construction data is then made immediately available through intuitive, actionable KPI's and dashboard reports that can be fully personalized, and accessed on any mobile device.

From the moment of login, users are greeted with beautiful, role-based dashboard reports that showcase key project milestones, activities, and alerts to any risks items needing attention. As part of your implementation, you can choose from a list of ready-built reports that span a project's lifecycle, or easily create your own custom reports using our fast, and intuitive report writer. You're in full control. Always.

Key Features

- Role based dashboards and KPIs
- Unified project management and financial reporting
- Real-time project insight and alerts
- Access on any mobile device
- Fully customizable, self-service reports



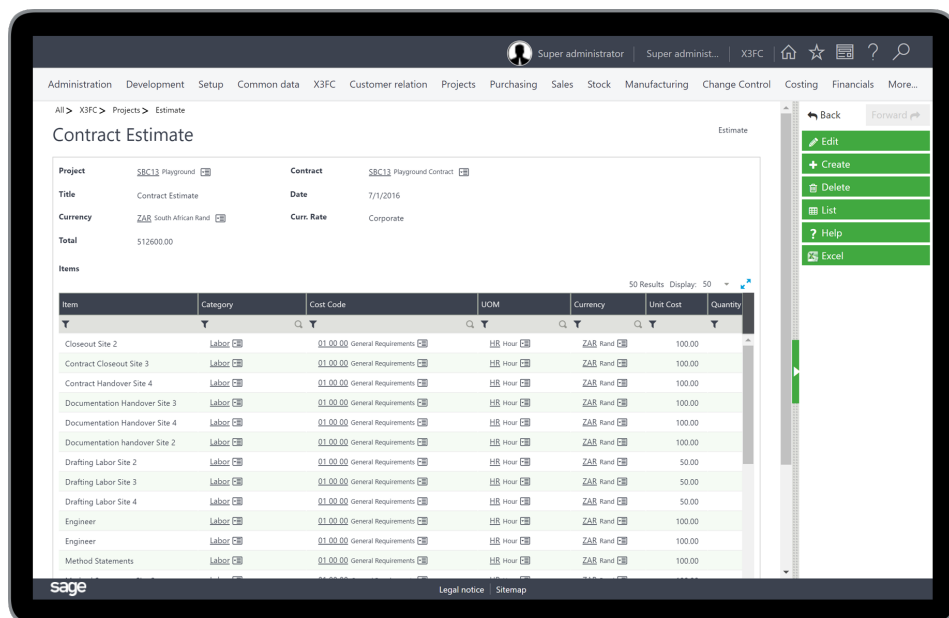
Estimating and sales management

Integrated estimating and CRM capabilities allow you to streamline the sales process and win more bids with the confidence that they are accurate and profitable.

And once awarded the contract, you'll save time and reduce the risk of errors by replicating your bid data as either an Estimate or Bill of Quantities into the Enterprise Management Construction project solution. This will allow the project team to compare planned, committed and actual costs.

Key Features

- Integrated bid & estimate management
- Direct Bill of Quantities to Job Costing import
- Historical pricing
- Integrated CRM




Seamlessly integrate with Enterprise Management

There is an absolute need for the construction industry to review systems now so that they can take full advantage of the technology to come.

Seamlessly integrated with Enterprise Management** Enterprise Management Construction* is built to deliver both front and back office operations, running entirely in the cloud and across any device.

Scalable to thousands of users, Enterprise Management Construction is the natural choice to deliver an end-to-end construction solution using pre-defined business rules and processes to create a user experience that leads the market.

Enterprise Management core business management capabilities and technology

Project management	Contract management	Sub-contract management	Project financial tracking & cash flow
Project visualizations	Project dashboards	Work packages & job cards	Time sheet transaction
Project transmittal & document management	Consistent work flow automation	Integration-estimation	Integration-payroll
Technology-common database	Technology-web native	Technology-device independence	Technology-on-premise or private cloud
Technology			
			
Common		Partner-hosted	



About Sage

Sage energizes the success of businesses and their communities around the world through the use of smart technology and the imagination of our people. Sage has reimagined business and brings energy, experience and technology to inspire our customers to fulfil their dreams. We work with a thriving community of entrepreneurs, business owners, tradespeople, accountants, partners and developers who drive the global economy. Sage is a FTSE 100 company with 14,000 employees in 24 countries. For more information, visit www.sage.com.

Enterprise Management**

Enterprise Management is Sage's global ERP solution for mid-sized companies and subsidiaries of large groups with international demands. For over 10 years Enterprise Management has been a proven and comprehensive ERP solution addressing mid-market companies' specific requirements and challenges in industries from manufacturing and services, to distribution and many more. 5,100 customers in 100+ countries worldwide have chosen Enterprise Management because it helps companies move forward with a faster, simpler and more flexible ERP solution.

Have questions?

Enterprise Management Construction* is available for purchase as a separate module that integrates seamlessly with Enterprise Management** version 11.

Contact your local Sage colleague and/or authorized Sage business partner.

*Enterprise Management Construction was formerly known as Sage X3 Construction

**Enterprise Management was formally known as Sage X3

The Sage Group plc
North Park
Newcastle Upon Tyne
NE13 9AA
United Kingdom
Tel: +44 (191) 294 3000

For more information visit:

www.enterprisemanagementconstruction.com

©2018 The Sage Group plc or its licensors. Sage, Sage logos, Sage product and service names mentioned herein are the trademarks of The Sage Group plc or its licensors. All other trademarks are the property of their respective owners.

